

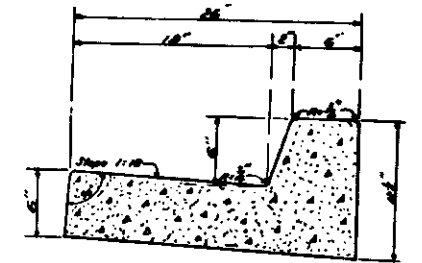
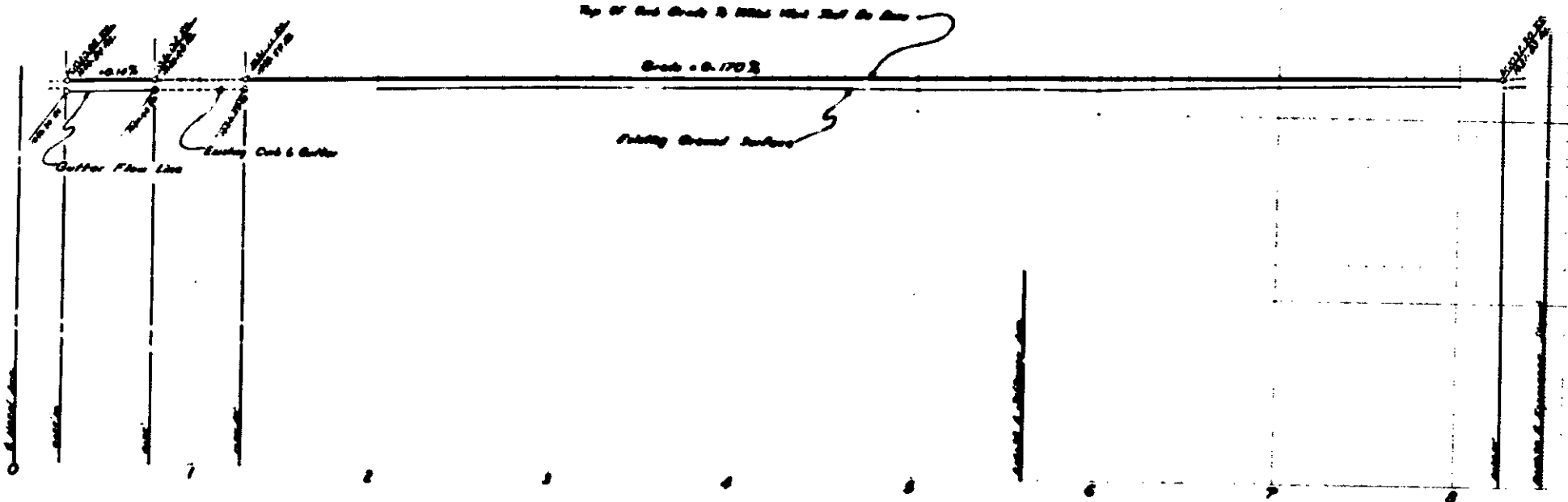


PROFILE  
Scale: 1" = 40'

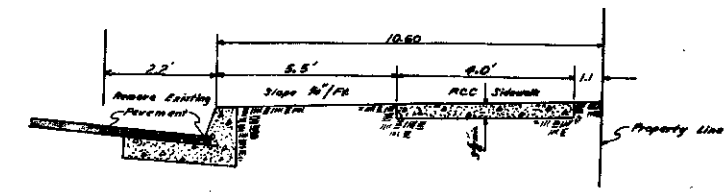
GENERAL NOTES

1. All work embodied on these plans shall be done in conformity with applicable provisions of specifications No. 627.
2. Access Curb for driveways where necessary. Exact location & width to be determined in the field.
3. Bench Mark: EL. 1033.12, N.E.S.S. Screw South East corner Hazel Ave. & Esplanade Dr.
4. Removal of Obstructions:  
To be removed & replaced by others.

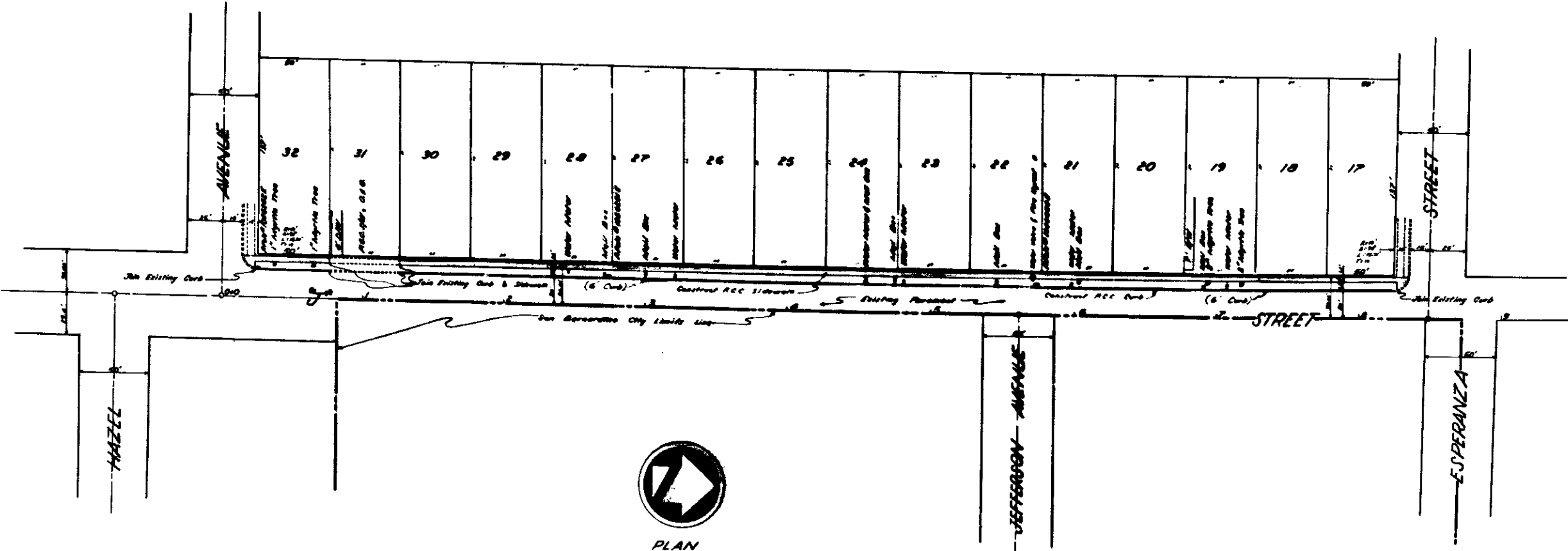
1030



TYPICAL SECTION P.C.C. CURB



TYPICAL SECTION P.C.C. SIDEWALK



PLAN  
Scale: 1" = 40'

DEPARTMENT OF ENGINEERING  
CITY OF SAN BERNARDINO  
CURB & SIDEWALK  
"J" STREET  
between  
HAZEL AVE & ESPERANZA

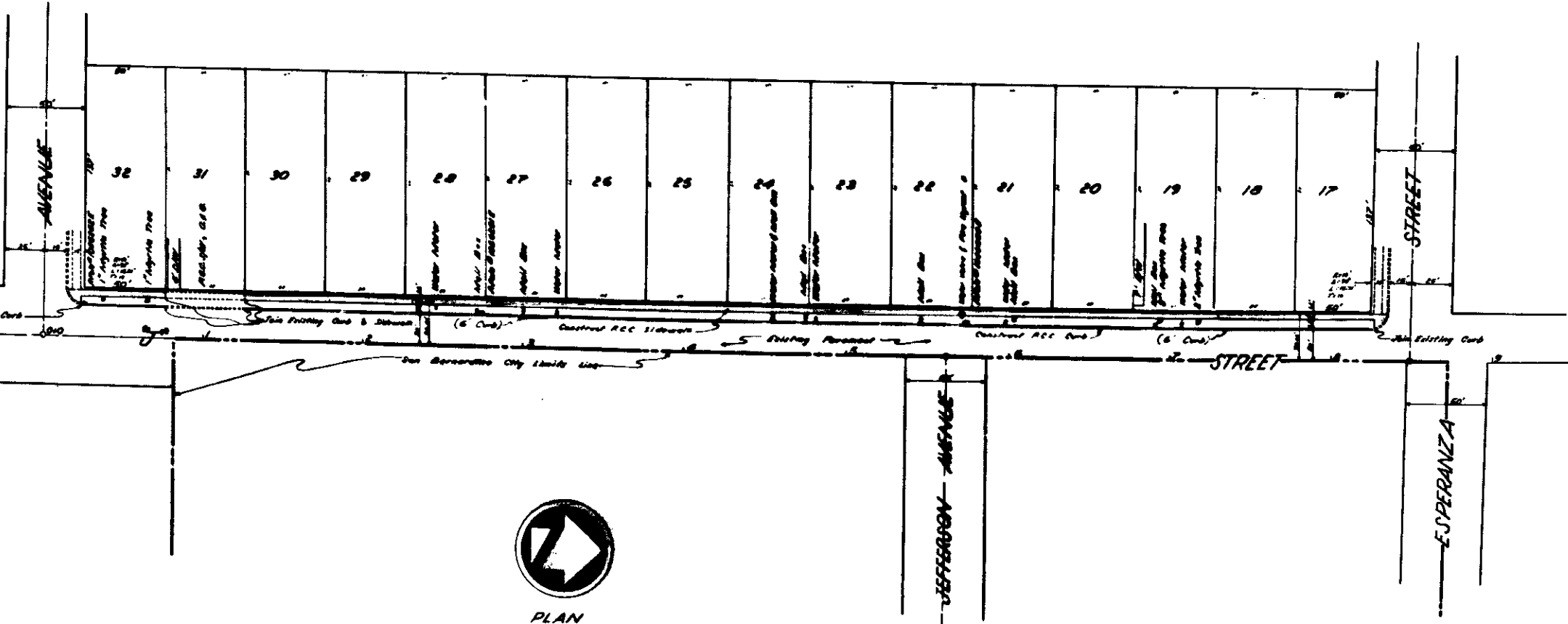
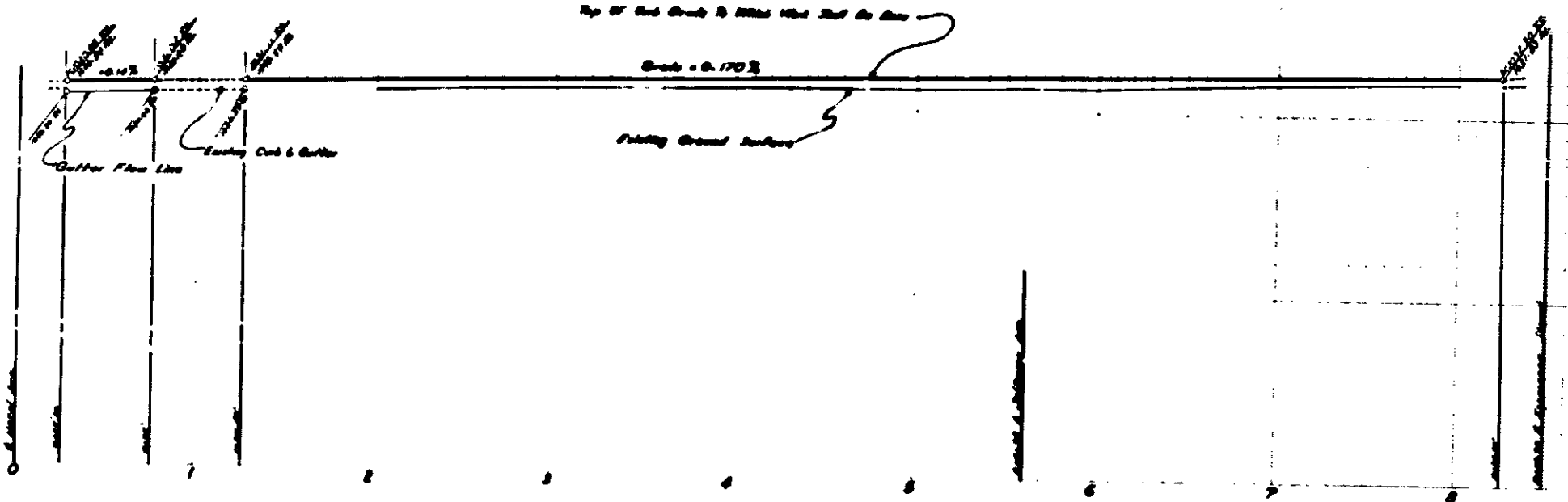


PROFILE  
Scale: 1" = 4'

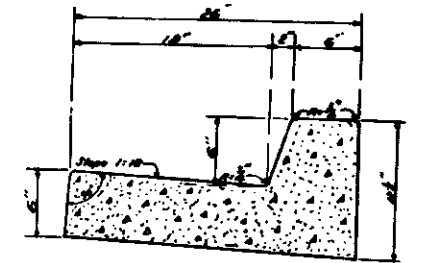
GENERAL NOTES

- All work embodied on these plans shall be done in conformity with applicable provisions of specifications No. 6277.
- Access Curb for driveways where necessary. Exact location & width to be determined in the field.
- Block Mark: EL. 1033.12, N.E.S.L. Screw South East corner Hazel Ave. & Esplanade Dr.
- Removal of Obstructions:  
To be removed & replaced by others.

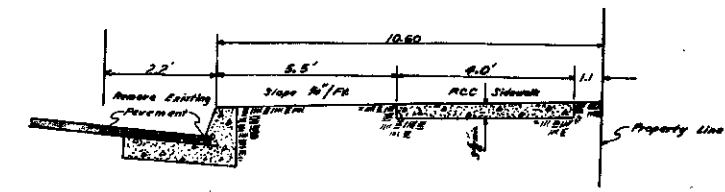
1030



PLAN  
Scale: 1" = 40'



TYPICAL SECTION P.C.C. CURB



TYPICAL SECTION P.C.C. SIDEWALK

DEPARTMENT OF ENGINEERING  
CITY OF SAN BERNARDINO  
CURB & SIDEWALK  
"J" STREET  
between  
HAZEL AVE & ESPERANZA